

Your support will help build an urgently needed larger hospital guest house to provide lodging and caring support for families facing cancer and other serious illness.

Project Overview:

Project Name: A Home for Healing

Organization Name: Kathy's House

Mission: Kathy's House, Inc. is a non-profit hospital guest house committed to providing affordable lodging and caring support in a "home away from home" environment for families who need to travel to Milwaukee for medical care.

Vision: Become a replicable national model in the field of Hospital Guest Housing by developing a state-of-the-art facility and delivering superior guest services which improve patient care and the healthcare delivery model.

System Size: 75 kW

Cost savings over 30-year life of system: \$432,081

Extra Total Cash Flow After Factoring the System Cost: \$345,191

System Cost: \$85,060

Grants, Rebates, Incentives: \$36,000

Donations Needed: \$49,060

Make an Impact:

Please help make this project possible.

Donate:

kathys-house.org/donate-new-home

pattym@kathys-house.org

414-453-8290



Case Statement: A New Home for Healing

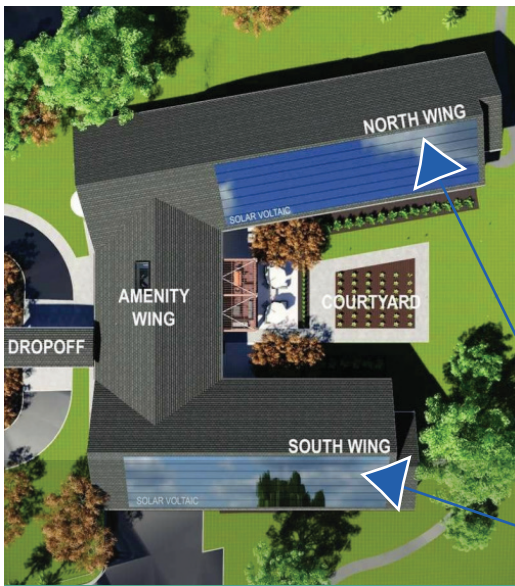
Kathy's House is excited to offer you an opportunity to support our "New Home for Healing" powered by a 75 kW solar PV system and will be the first solar powered facility on the Froedtert Hospital & Medical College of Wisconsin campus. The addition of solar will reduce our electricity costs by upwards of 75% in our new House—allowing us to provide affordable lodging and caring support in a "home away from home," eco-friendly environment for families who need to travel to Milwaukee for medical care. This savings will increase our financial stability and enable us to direct as many resources as possible to helping more patients heal, focus on wellness, and build a community with others who are facing similar medical journeys.

Many of our guests—1,500 served annually—come from populations that experience significant health disparities, including members of minority groups and people from rural areas. 50% of our guests are aged 61+ and 20% are from diverse/ethnic groups. By providing housing for these patients and their family members while they are obtaining advanced medical treatment in Milwaukee, Kathy's House is able to serve everyone—despite their age, race or economic standing.

Nearly 90% of guests who stay at Kathy's House have cancer or a family member with cancer. The remaining 10% are faced with cardiac conditions, trauma, or other medical crises. More than one-third of our guests report household incomes under \$30,000, and 10% are not able contribute anything toward the cost of their stay.

Kathy's House opened in 2001. Since then demand for our services has grown dramatically. In both 2018 and 2019, we were forced to turn away over 600 guests each year due to lack of room availability. **This is particularly significant because 40% of guests report that they would not have been able to access needed healthcare without a facility such as Kathy's House.** It is not a stretch to say that turning people away results in patients not receiving the life-saving medical care they need.

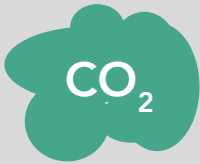
— Flip for More —



As a hospital guest house committed to providing lodging and caring support for families, we focus on taking care of people, including their macro-environment. We see utilizing clean energy as our own, modest contribution to cleaner air, water and soil, both here in South Eastern Wisconsin and globally. A healthier environment benefits all of us, and let's our benefactors and the community know we are committed to our mission and vision. Any monies saved by producing our own on-site power, will be resources used to pursue our primary mission and achieve our core goals. **We are committed to being good stewards of our donor dollars and see clean, renewable energy, produced on-site as a triple bottom-line winner!** Any monies saved by producing our own on-site power, will be resources used to pursue our primary mission.

Our projections show an electric bill savings of \$432,081 over a 30-year period offering an extra total cash flow of \$345,191, after factoring the \$85,060 project costs to purchase the solar array.

Environmental Benefits:

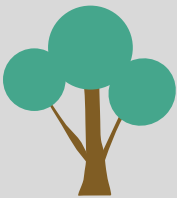


This solar project would save 70,000 kilograms of CO2 from entering the atmosphere in one year.



This is equivalent to taking 15 cars per year off the road.

— OR —



Planting more than 1.5 million trees over 25 years.

Make an Impact:

Financing for New Home:

Fundraising Goal = \$12,000,000
Funds raised so far = \$10,100,000
Donations needed = \$1,900,000

Financing for Solar Install Only:

Fundraising Goal = \$146,250
Rebates & Incentives = \$36,900
Donations needed = \$109,350

Donate:

kathys-house.org/donate-new-home
pattym@kathys-house.org
414-453-8290

Your Donation Helps Put Solar Here!

Donations Still Needed for This Solar Project: \$49,060

Your gift will help us achieve these cost savings – allowing us to reallocate our resources on services for families facing cancer and other serious illness

Please help make this project possible.

Donate:

kathys-house.org/donate-new-home
pattym@kathys-house.org
414-453-8290



Kathy's House
A HOSPITAL GUEST HOUSE

Partners:



Legacy Solar Co-op is a Wisconsin-based, member-owned cooperative providing solar and energy efficiency products and services. Our goal is to bring people together to support local and statewide solar and other clean energy initiatives.



Arch Electric is our system installer. Arch Electric installs solar electric systems for residential, commercial, agricultural, non-profit/governmental, and utility customers. Their mission is to educate, inspire, and empower current and future generations to choose a clean sustainable form of energy.



Midwest Renewable Energy Association (MREA) has provided logistical and financial support through its Wisconsin Solar Corps initiative. MREA's mission is to promote renewable energy, energy efficiency, and sustainable living through education and demonstration.



RENEW Wisconsin's Solar for Good

initiative provided essential material support for the project. Solar for Good fosters the expansion of solar power among mission-based non-profits and houses of worship in Wisconsin. Solar for Good grants non-profits up to 75 solar panels for solar arrays 75 kW and smaller, and up to 150 solar panels for solar arrays larger than 75 kW.